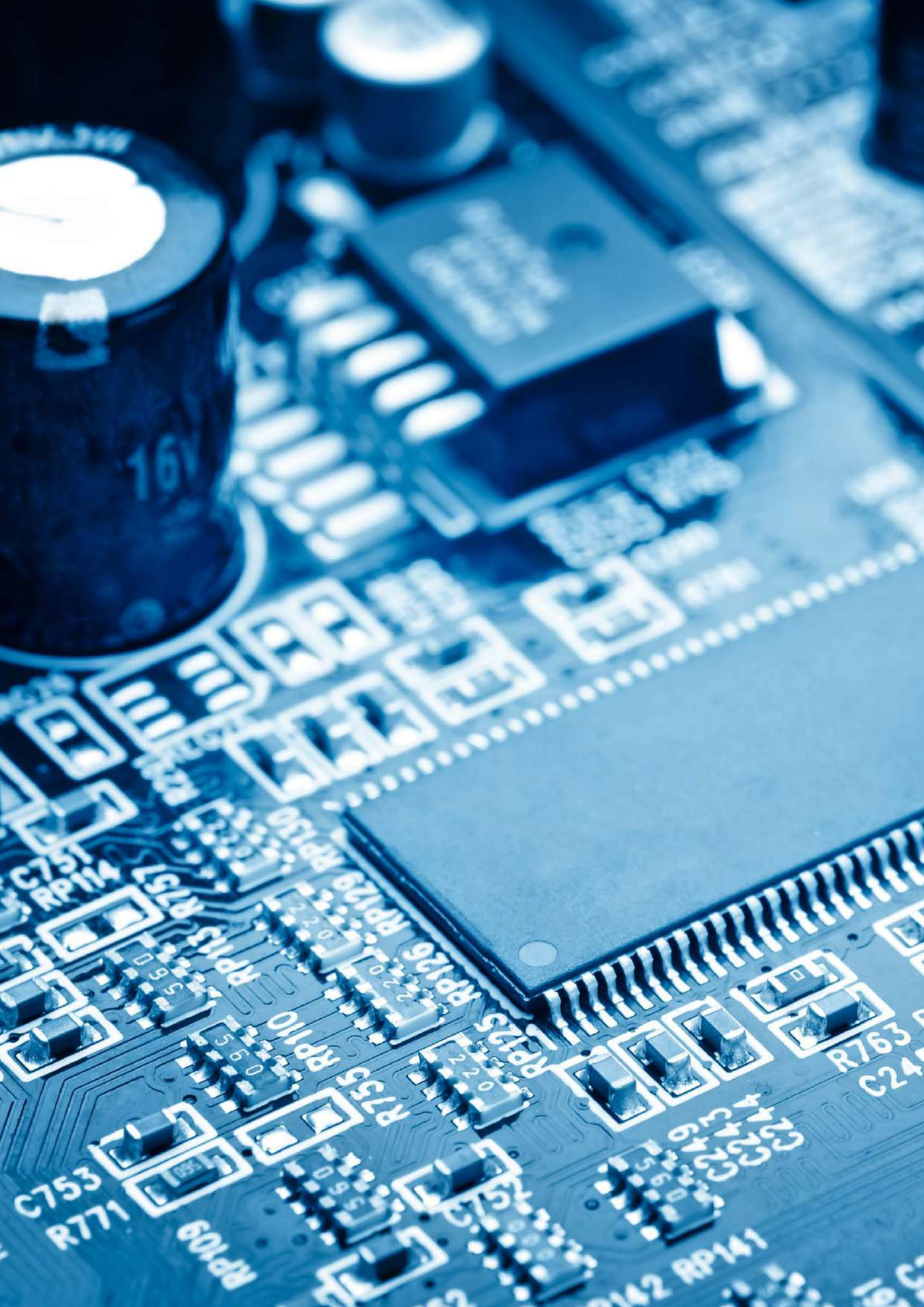


SOLUTIONS FOR SYSTEM INTEGRATORS

Get ready for the SmarteH LPC-2 Programmable Controller





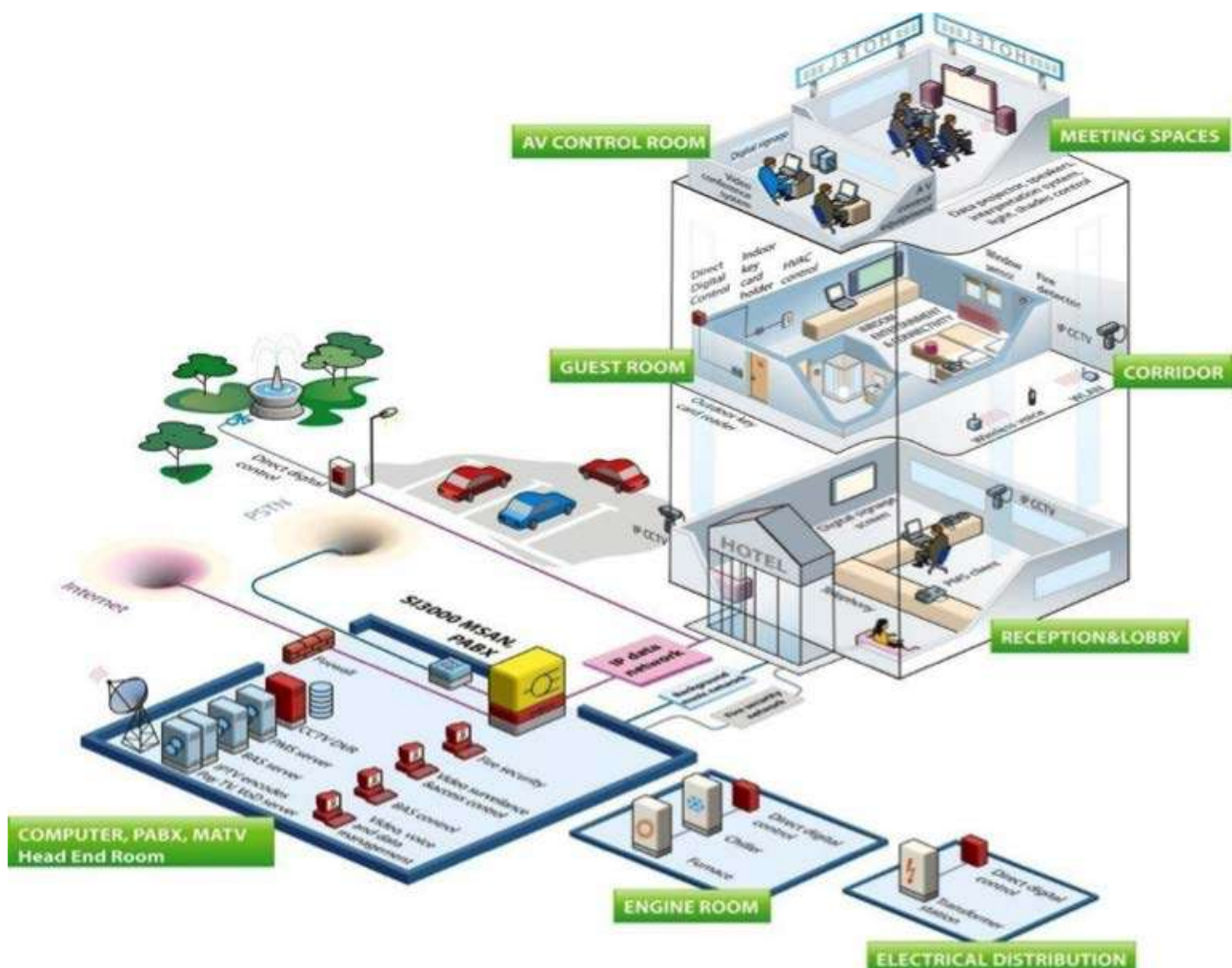
SmarteH LPC-2 Programmable Controller is a hybrid of two worlds

Get to know amazing technology that combines the best features of the industrial PLC (Programmable Logic Controller) such as modular integration, standard programmability and controllers for building automation such as ease of installation and affordable price.



With Smarteh products and know-how, a hotel, an office or any other building becomes a smart building

LPC-2 controller family is open programmable, thus allowing a much wider range of use and flexibility than any building automation solution. Standard switches, push buttons and sensors can be connected directly to the input modules. Actuators like lights, valves and shades can be connected directly to the output modules. Therefore, it is easier to meet project requirements, reduce designing and installation complexity, and consequently achieve higher cost efficiency.



SmarteH IDE free software with all 5 standard PLC languages supported

Unique Smarteh IDE (Integrated Development Environment) software enhances designing and configuration process even further by the use of graphical user interface, where actual modules are shown and the corresponding physical connections and variables are visualized. Hence an automation expert that programmed any standard industrial PLC, will find himself at home with Smarteh IDE.

SmarteH IDE supports five different standard PLC programming languages: Ladder diagram (LD), Structured Text (ST), Function Block Diagram (FBD), Instruction List (IL) and Sequential Function Chart (SFC).

Composing, programming and debugging Smarteh LPC-2 controllers with Smarteh IDE is completely free of charge. Loading the application software from PC to controller does not require any software or hardware keys and no fee is charged to install and commission Smarteh devices.



LD

ST

IL

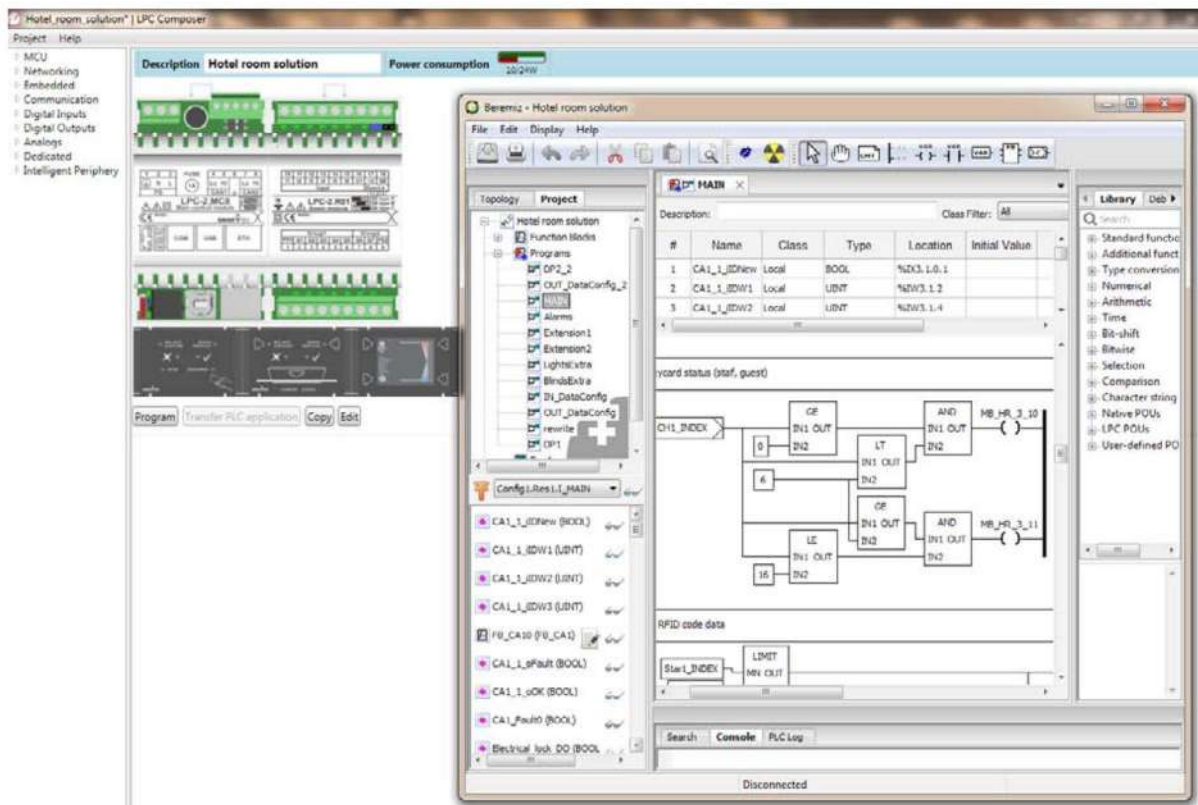
FBD

SFC

+

The unique system fit technology - an optimal solution for the particular project installation

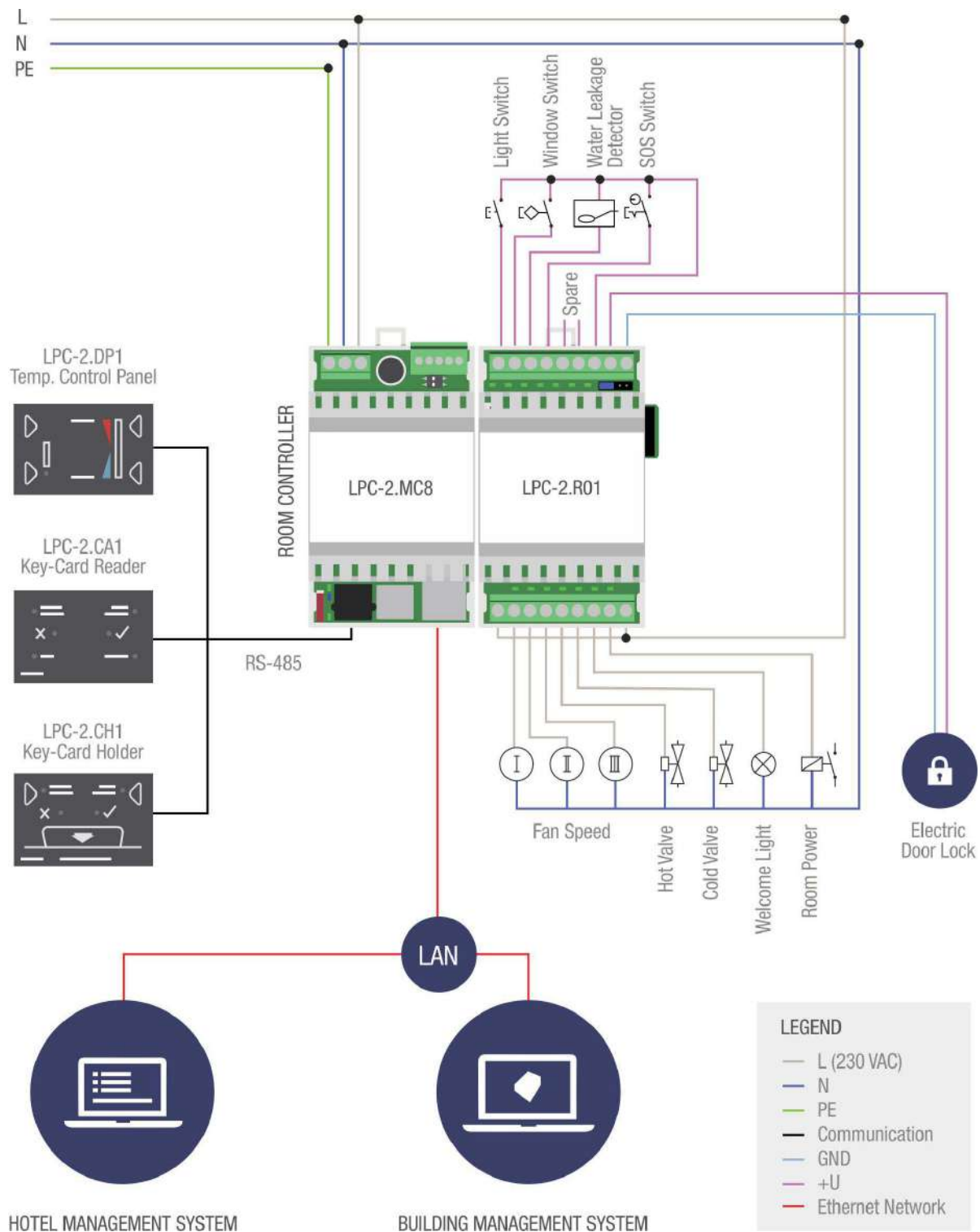
SmarteH designing support team can provide a pre-programmed plug & play or a custom-made PLC application software, depending on customer's needs. In this way, it always presents an optimal solution for the particular project installation. SmarteH solution for hotels goes even a step further with the LPC-2.R01 module, a function and cost-wise adjusted module to control automation needs of a typical hotel room. As such, it controls lights, room power, electrical door lock, fan coil or any other air conditioning unit, and read balcony door switch, key card holder, etc.



Existing ethernet can be used

The main control module can be easily integrated into our BMS (Building Management System) using standard communication connections and protocols, such as Modbus Ethernet TCP/IP, CAN Open or LON.

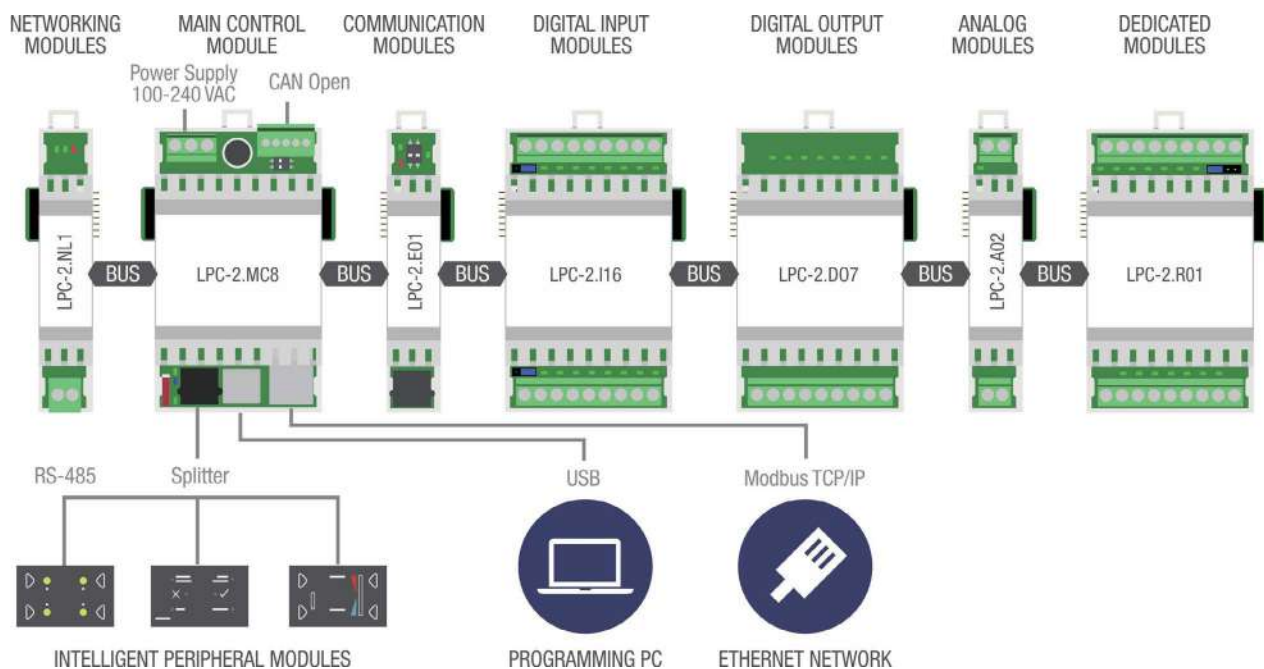
Example of electrical scheme of a single hotel room connected to the BMS



The same modules for the entire hotel complex

SmarteH modular controller philosophy enables that equal equipment is used to control the entire facility (rooms, corridors, utility rooms, kitchens, etc.). Using one of the standard communication protocols, controllers can be easily combined together in an interoperable network with one monitoring and controlling system. Such solution allows optimal utilization of all controlled devices and consequently significant energy saving.

Modular configuration with Smarteh LPC-2 main controller



Best technical support: lead generation backed with sales and technical training

To make a particular project as profitable as possible, the system integrator needs an integration team with high expertise. However, predefined solutions are available, which offer custom application programmes and building automation know-how. Consequently, only installation and parameterization is left to the integration team.

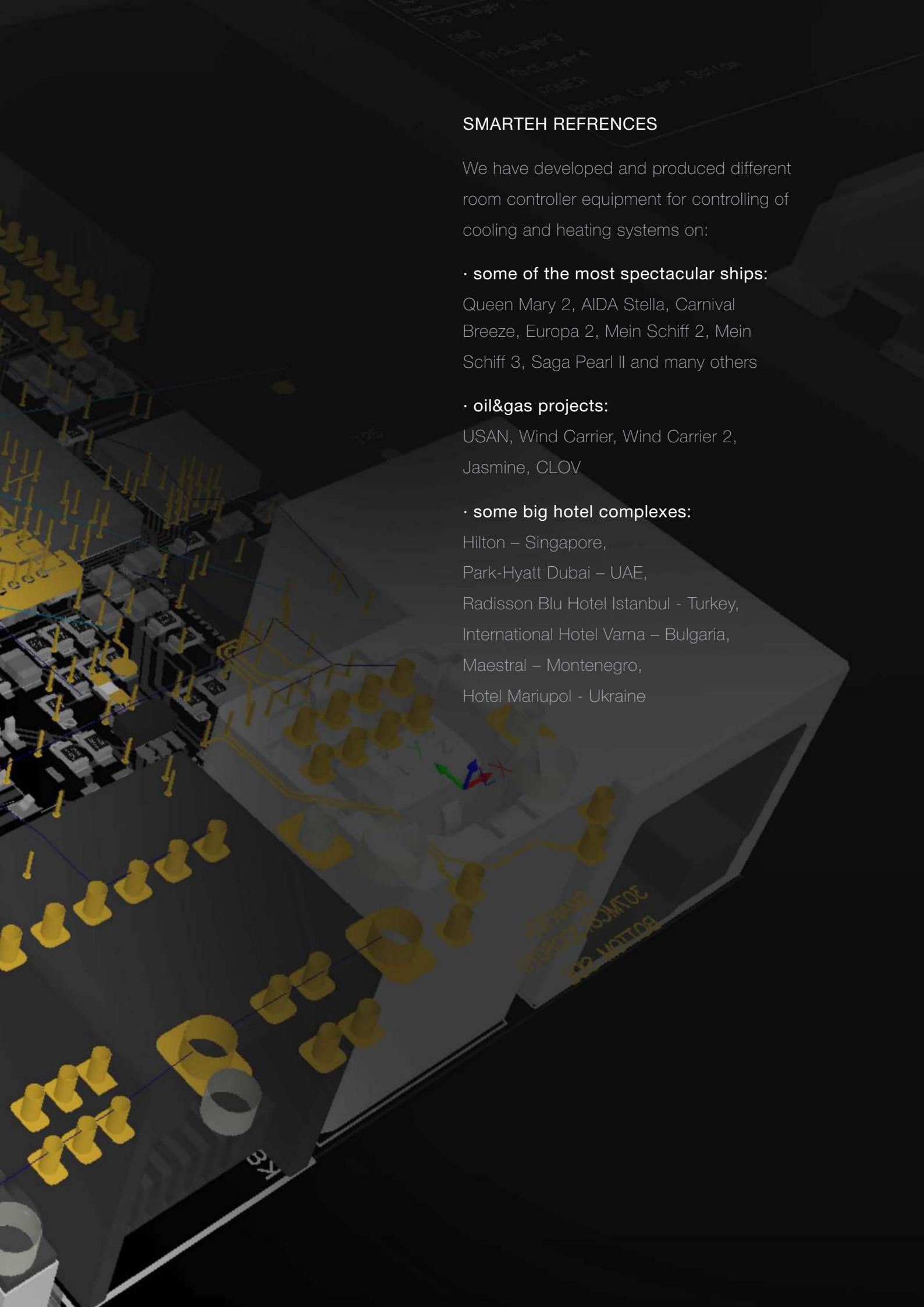




SMARTEH LIVING SYSTEMS

Passion for outstanding technological solutions

SmarteH is a team of innovators, developers, visionaries and processing equipment manufacturers that can provide a wide range of solutions, from a single controller to an entire turnkey solution. The guiding principle of our work is the passion for innovations in technology. We would like to make our service comprehensive by offering a complete professional and technical support. Annually we develop and produce thousands of controllers mainly installed in large cruise ships, oil platforms and luxury hotels all over the world.



SMARTEH REFERENCES

We have developed and produced different room controller equipment for controlling of cooling and heating systems on:

- **some of the most spectacular ships:**

Queen Mary 2, AIDA Stella, Carnival Breeze, Europa 2, Mein Schiff 2, Mein Schiff 3, Saga Pearl II and many others

- **oil&gas projects:**

USAN, Wind Carrier, Wind Carrier 2, Jasmine, CLOV

- **some big hotel complexes:**

Hilton – Singapore,
Park-Hyatt Dubai – UAE,
Radisson Blu Hotel Istanbul - Turkey,
International Hotel Varna – Bulgaria,
Maestral – Montenegro,
Hotel Mariupol - Ukraine

SMARTTEH d.o.o.

Poljubinj 114, 5220 Tolmin, Slovenia

tel.: + 386(0)5 388 44 00

fax.: + 386(0)5 388 44 01

info@smartteh.si

www.smartteh.com