

# SmarteH Access



# Table of Contents

SMARTEH ACCESS SYSTEM DESCRIPTION	
-----------------------------------	--

---

3
---



# SmarteH Access System Description

The access system is one of the top priority security segments in the hotels and other business buildings. Implementing the reliable online controlled locking system, the users - guests will feel safe and comfortable and the hotel management will have powerful tool for complete supervision over the access in the hotel. Smarteh Access System is an application module integrated as a part of the Smarteh Building Management system (BMS), but can run stand-alone also.

It is based on RFID (Radio Frequency Identification) contact-less technology, which is reliable and robust proven concept.

The Access System is running on centralised computer/s (with USB RFID reader attached for key-card assignment) and it is connected online through the network with the access controllers with access units in the hotel (room doors, halls and facility entrances etc...)

Online concept enables the real-time features as online key-card access assignment, monitoring and logging of all access events.

The interface to Hotel Management Systems can be established for managing the RFID keycards from the front desk automatically and in real time execution through the network.

Example: The receptionist enters the demand to create new card for certain guest-room. It reads not assigned RFID card on the USB reader near its terminal. Within few seconds this card is assigned to certain automation controllers to open defined access doors ( room, floor, garage...)

This connectivity brings the new dimension of interoperability including the features that speed and simplify all of the functions needed to serve guests, manage hotel operations, and maintain and efficiently run enterprise.

The guest experiences fast and simple key-card service process and easy to use access concept from the check-in to door unlocking and room energy activation.



Figure 1: Smarteh Access key-cards usage steps

By standard RFID technology (Mifare, EMarine), the same cards can be used for other purposes as entering the prepayment facilities (pools, Spa, garage...) or for other identification purposes.

Besides the access purpose for door locking, the RFID Holders play a main role in hotel room occupancy detection that is related to the energy saving feature in hotel rooms.

The Smarteh Access System RFID readers/holder are designed to fulfil the highest architectural demands and can be mounted in various standard frames with almost unlimited colours and textures selection.



Figure 2: Smarteh Access Reader and Holder

Beyond the standard access indications, the RFID readers/holders integrates also additional useful hotel room information statuses as :

Room occupied, Room Service demand, Do Not Disturb and SOS (need for help).

This statuses are displayed also inside the Smarteh Access System application and at the same time at Smarteh BMS, achieving the informing on all levels (local for the staff, guests, and remote for the operators, receptionist and hotel management).

RFID keys are available in key-card, key-fob or wristband form, which can be custom design printed as-well.

Smarteh Access Manager features

The Smarteh Access system manages various key-card assignments and features as:

- addition of the new cards with access rights and validity parameters(expiring time).
- selective access assignment (suite rooms, facilities-sports, garage, elevators...)
- deletion of the card on demand or automatically by expiring time.
- operator password protection levels
- creation of the types-groups of the key-cards (time limited or unlimited master, staff, guest...).
- Any existing key-card setting adjustment can be done immediately without the presence of the card.
- Connectivity to Hotel Management Systems (FIAS protocol , SQL).
- Comprehensive logging of access events (access allowed, denied) and archiving
- Filtering the logging data by card or access device type(reader/holder in defined date&time range).
- Exporting the logging data for further analysis.
- Automatic synchronization procedure between the Access System and the access controllers ( Key-cards can be assigned even offline and the data is resent to the certain controllers immediately when the connection is established).

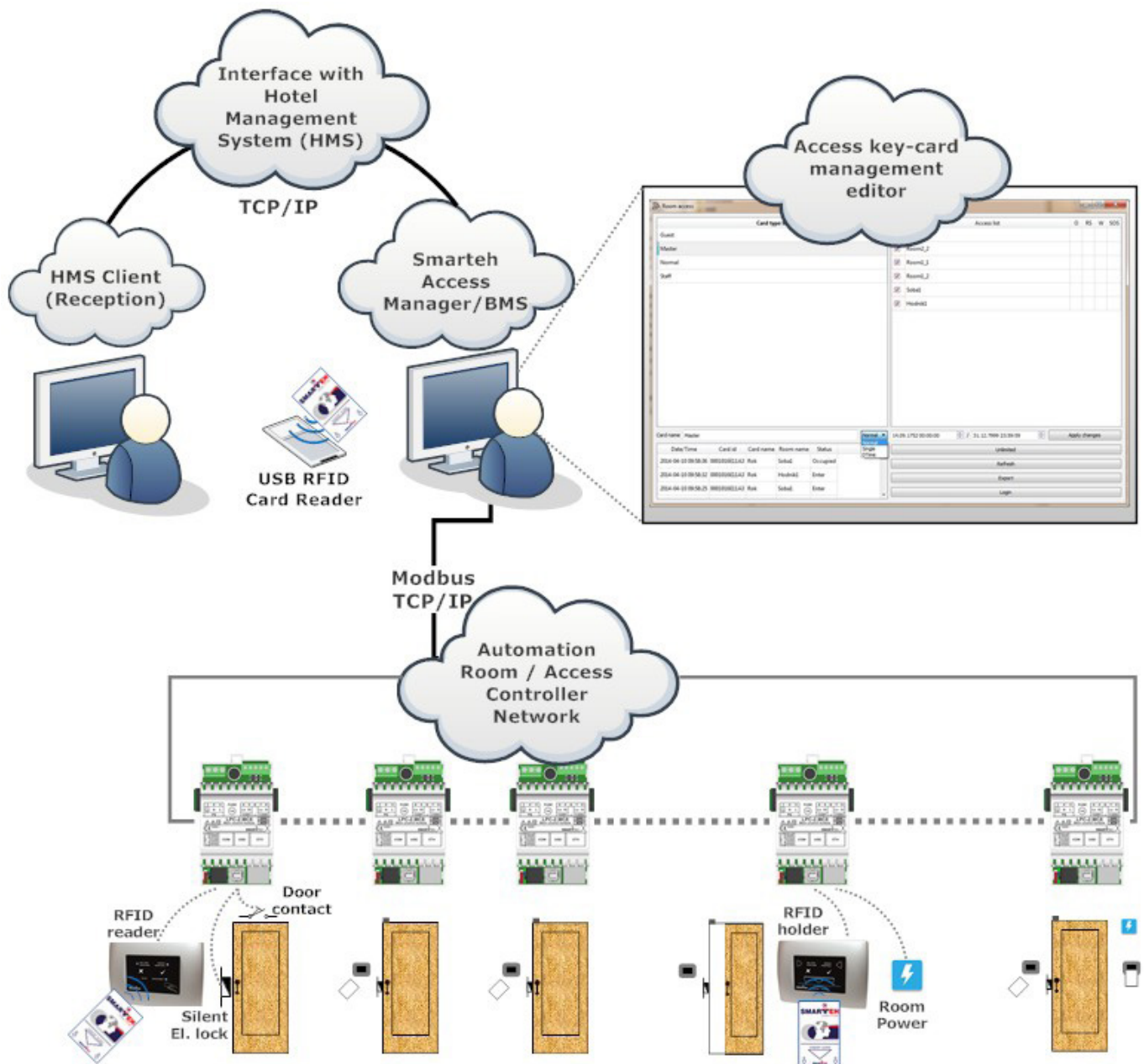


Figure 2: Smarteh Access architecture

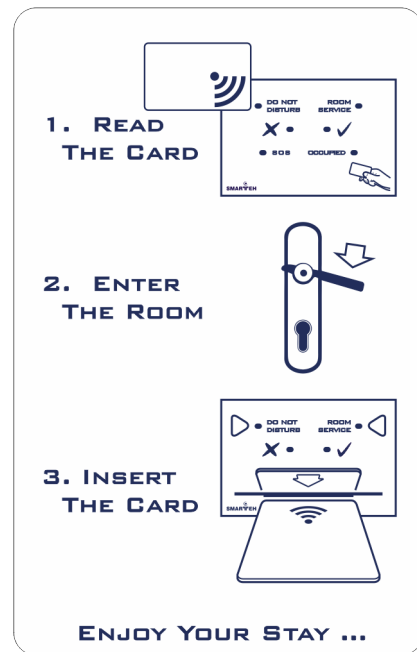
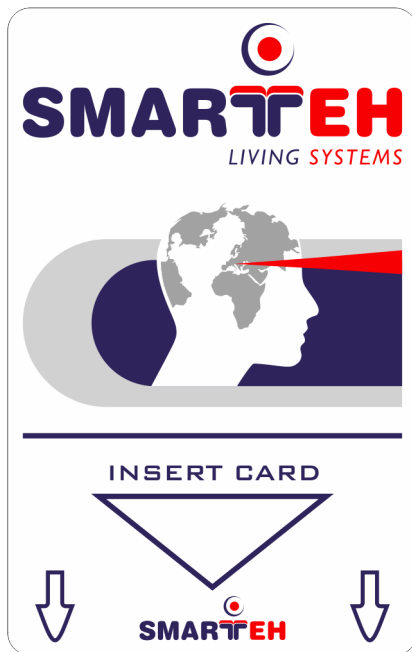
The access devices (key-card RFID readers/holders, electrical locks) of the Access System are directly connected to Smarteh LPC-2 controllers, thus the same automation equipment and capabilities for functioning is used as for all other automation systems.

So the access functioning can be integrated inside the controllers for the hotel room, halls or other systems, that minimizes the number of controllers, installations, cost of the equipment and simplifies the maintenance.

Next advantages are achieved with this, as controllers modularity, connectivity to standard electrical signals, usage of standard electrical devices as electrical locks in the door frame , push-buttons, door opening indicators etc...

The solution is flexible, adjustable and no special expensive elements on doors are needed.

By free programmable logic the functioning can be adjusted and upgraded by customer special demands.



We care for guest well-being



SMARTTEH d.o.o.

Poljubinj 114, 5220 Tolmin, Slovenia

tel.: + 386(0)5 388 44 00

fax.: + 386(0)5 388 44 01

[info@smartteh.si](mailto:info@smartteh.si)

[www.smartteh.com](http://www.smartteh.com)

