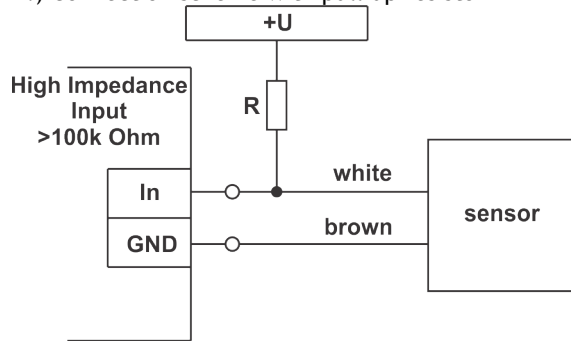


Electrical Connection

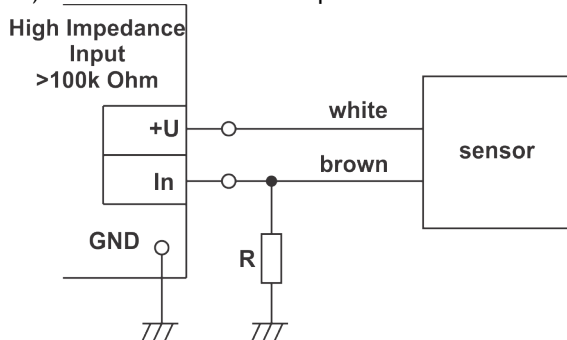
The device is constructed for the operation of protective low voltage (SELV). For the electrical connection, the technical data of the corresponding device are valid.

1.) Connection scheme with pull-up resistor



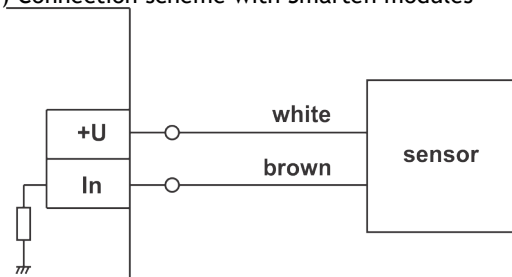
+U= 22 .. 28 V DC	R = 1 .. 10 kΩ
Water detected: voltage drop on sensor > 75 % Vcc. Water not detected: voltage drop on sensor < 4 V.	

2.) Connection scheme with pull-down resistor



+U= 22 .. 28 V DC	R = 1 .. 10 kΩ
Water detected: voltage drop on sensor > 75 % Vcc. Water not detected: voltage drop on sensor < 4 V.	

3.) Connection scheme with Smarteh modules¹



¹Note: Smarteh input modules (e.g., LPC-2.I16, LPC-2.DI1, LPC-2.DI5, LPC-2.R01, LPC-2.R02).



SMARTEH
LIVING SYSTEMS

DATA SHEET

Additional equipment
LWD-2
Water leakage sensor

We are always
available for
assistance!



SMARTEH d.o.o.
Poljubinj 114
5220 Tolmin
Slovenia
tel.: + 386(0)5 388 44 00
fax.: + 386(0)5 388 44 01
e-mail: info@smarteh.si
www.smarteh.com

©2016, SMARTEH d.o.o.

Vsak prenos tretjim osebam ali uporaba v nedogovorjene namene ni dovoljena.

All rights are reserved. Reproduction in whole or in part is prohibited without the prior written consent of the copyright owner.

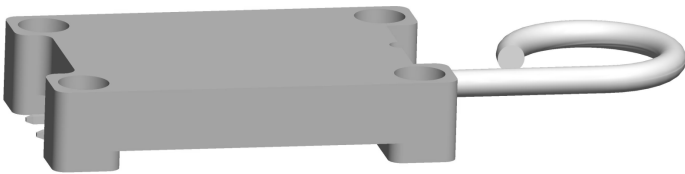
Basic Features

Flood detector is designed for an early warning of potential flood situation. The unit can be placed-on or fixed-to the floor/wall in the room where water occurrence is to be monitored.

Operation

In normal conditions (no pollution) resistance between contacts is low (voltage drop on sensor < 6 V) and green indication LED is on. When both electrodes are dipped into the water, resistance between the contacts becomes high (voltage drop on sensor > 80% Vcc) and green indication LED is off.

Used switching element is current protected bipolar transistor.



Technical Data

Measurement principle:
water impedance measurement, with 2 detector electrodes on the enclosure bottom

Output:

- transistor type
- supply voltage (Vcc): 22 .. 28 V DC
- max. current: 50 mA
- sensor serial resistor: 1 .. 10 kΩ
- sensor voltage drop while not detecting water: < 4 V
- sensor voltage drop while detecting water: > 80% Vcc

Connection cable:

- 2 pole, 0.34 mm²; length 4 m
- halogen free, flame retarding
- coloring accordance to DIN 47100
- conductor resistance max 138 W/km

Enclosure:

plastics ISOFORM PE-HD, alkali resistant molding

Protection:

IP68

Ambient temperature:

0 to 60 °C

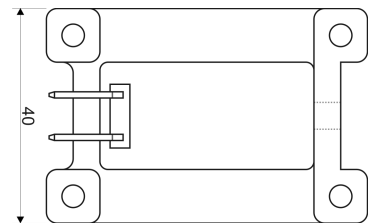
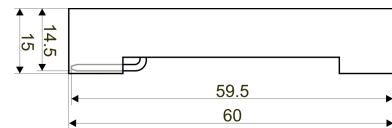
Transport:

-30 .. 80 °C / max. 95% Rh, no condensation

Weight:

100 g

Housing dimensions



* all dimensions are in mm

Mounting Instructions

The LWD-2 water sensor with its dead weight stays on four plastic feet. The detector electrodes are 0.5 mm shorter than housing.

The sensor is not suitable for a permanent underwater use (max. 2 days). With normal water, the measuring element is maintenance free.

Aggressive and solvent based liquids can damage the sensor or result in faulty measurements depending on nature and concentration. A contamination of the sensor electrodes also results in faulty measurements.

Security Advice

The installation and assembly of electrical equipment may only be performed by a skilled electrician.

The modules must not be used in any relation with equipment that supports, directly or indirectly, human health or life or with applications that can result in danger for people, animals or real value.

Ordering informations

P/N	Cable length
206LWD10002001	4 m